



Icahn
School of
Medicine at
Mount
Sinai

*Corinne Goldsmith
Dickinson Center for
Multiple Sclerosis*

22ND ANNUAL MS CENTER CELEBRATION

THURSDAY, MARCH 7, 2024

MESSAGE FROM THE CORINNE GOLDSMITH DICKINSON CENTER LEADERSHIP

It is with immense pleasure that we extend a warm welcome to each of you as we gather at the Metropolitan Club to celebrate the 22nd anniversary of the Corinne Goldsmith Dickinson Center for Multiple Sclerosis at Mount Sinai.

Tonight holds special significance as we honor the unwavering dedication and remarkable contributions of a foundational figure in the CGD Center's history, Katherine Goldsmith. Katherine's steadfast support has played a pivotal role in the establishment and remarkable growth of the Center over the past 22 years. We are proud to announce Katherine as the recipient of this year's Clifford H. Goldsmith Award, named in honor of her late husband, Clifford Goldsmith. It was Clifford's vision that led to the creation of the Corinne Goldsmith Dickinson Center for Multiple Sclerosis, a beacon of hope inspired by his daughter Corinne's courageous battle with multiple sclerosis.

Recognizing the need for a specialized hub dedicated to addressing the evolving needs of MS patients, Clifford and Katherine embarked on a journey to establish a center that not only provides exceptional care but also fosters groundbreaking innovation and expert training. With the generous support of individuals like the late George J. Gillespie, III, whose significant investment helped launch the CGD Center in December 2001, their vision became a reality.

Since its inception, Katherine has remained an unwavering benefactor, driving the CGD Center to new heights of excellence. Through her generosity and commitment, the Center continues to lead in advancing discoveries, enhancing clinical practices, and nurturing the next generation of leaders in translational research and patient care.

We extend our heartfelt gratitude to Katherine for her partnership and invaluable contributions to the CGD Center, and to all our esteemed guests; your presence tonight underscores your vital role in furthering the Center's mission to enhance the lives of our patients. We are profoundly grateful for your ongoing support and dedication.

Thank you for joining us in celebrating this momentous occasion, and here's to many more years of transformative impact at the CGD Center.

FRED D. LUBLIN, MD
Director and Saunders Family
Professor of Neurology
Icahn School of Medicine at Mount Sinai



AARON E. MILLER, MD
Medical Director,
Professor of Neurology
Icahn School of Medicine at Mount Sinai



ILANA KATZ SAND, MD
Associate Director,
Associate Professor of Neurology
Icahn School of Medicine at Mount Sinai



MESSAGE FROM MOUNT SINAI HEALTH SYSTEM LEADERSHIP

It is with great excitement and gratitude that we come together once again to commemorate the Corinne Goldsmith Dickinson Center for Multiple Sclerosis at Mount Sinai and its continued accomplishments.

The CGD Center's relentless pursuit of excellence in the care provided to multiple sclerosis patients, both locally at Mount Sinai and across the globe, fills us with immense pride. Within our caring and collaborative environment, clinicians and scientists work together across disciplines, exploring every avenue to enhance the lives of those affected by this condition. The enduring relationships we have forged with many patients since the Center's inception in 2001 stand as a testament to the exceptional dedication of our team.

Beyond setting a standard for MS care, the CGD Center serves as a beacon of innovation in healthcare delivery, embodying best practices that inspire the broader healthcare community.

As the Center has evolved into a global leader, we have been deeply moved by the unwavering loyalty of our friends and partners. Your generous patronage has been instrumental in the numerous triumphs of the CGD Center, and your continued support is paramount in sustaining our mission to unravel the complexities of multiple sclerosis while providing compassion and solace to those affected by this chronic illness.

A special acknowledgment is due to this year's honoree, Katherine Goldsmith, whose exceptional dedication has been integral to the Center's journey from its inception. Katherine's profound commitment to advancing patient care and pioneering discoveries has left an indelible mark on the CGD Center. Her unwavering support, alongside that of her family, continues to drive our mission forward.

We extend our deepest gratitude to each of you for your invaluable partnership and steadfast support. Together, we are making a tangible difference in the lives of MS patients and their families, and we are profoundly grateful for the opportunity to do so.

Thank you for standing with us in our ongoing quest to transform the landscape of multiple sclerosis care.

BRENDAN CARR, MD, MA, MS
Chief Executive Officer
Mount Sinai Health System



DENNIS S. CHARNEY, MD
Anne and Joel Ehrenkranz Dean
Icahn School of Medicine at Mount Sinai
President for Academic Affairs
Mount Sinai Health System



MARGARET PASTUSZKO, MBA
President and Chief Operating Officer
Mount Sinai Health System



Honoring

KATHERINE GOLDSMITH

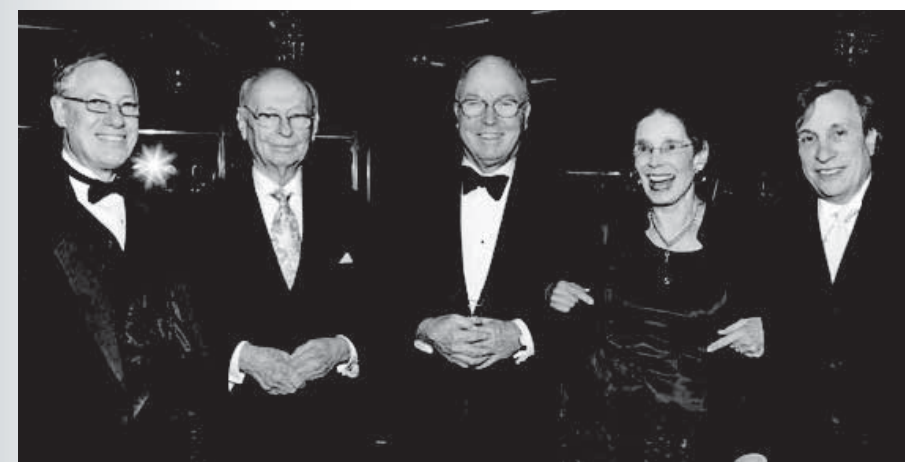
2024 Clifford H. Goldsmith Award Recipient



A lifelong New Yorker, Katherine Goldsmith was raised in Greenwich Village, and pursued interests in painting and music.

She met and married Clifford Goldsmith in 1969. Several years later, Clifford's eldest daughter, Corinne, was diagnosed with multiple sclerosis. While Clifford served as Chairman of the National MS Society, Katherine co-chaired Project Rembrandt/ The Creative Will, which exhibited the works of professional artists living with MS.

Today, Katherine and her daughters are actively involved in the Corinne Goldsmith Dickinson Center for MS, which opened its doors in 2001. She is a vital participant in furthering its mission set by Clifford, its co-founder.



**Thank
You,
Katherine!**

MS GALA PAST CHAIRS AND HONOREES

2003

Honoring Meredith Vieira and
Richard Cohen

Robert Friedman
Michael Price and Michael Wiener

2004

Meredith Vieira and Richard Cohen

2005

Meredith Vieira and Richard Cohen
Barbara Walters

2006

Meredith Vieira and Richard Cohen
Katherine and Clifford Goldsmith
Jean and Charles Osgood

2007

Meredith Vieira and Richard Cohen
Jean and Charles Osgood

2008

Joan and Lucio A. Noto

2009

Elissa Gretz Friedman, MD and
Robert Friedman
Deepka and Shyam Gidumal
George and Eileen Gillespie
Katherine and Clifford Goldsmith
Parri Kreuter Hirsch and John Hirsch
Linda Schoenheimer and Ric McCurdy
Jill and Robert C. Smith

2010

Elissa Gretz Friedman, MD and
Robert Friedman
Eileen and George Gillespie
Katherine and Clifford Goldsmith
Joan and Lucio A. Noto
Jill and Robert C. Smith

2011

Alessandra Noto Carlin and
Stephen Carlin
Eileen and George Gillespie
Katherine and Clifford Goldsmith
Joan and Lucio A. Noto
Jill and Robert C. Smith

2012

Alessandra Noto Carlin and
Stephen Carlin
Eileen and George Gillespie
Katherine and Clifford Goldsmith
Maria and Gaetano Muzio
Joan and Lucio A. Noto
Jill and Robert C. Smith

2013

No Chairs
Celebrity Chef, Marc Murphy

2014

Eileen and George Gillespie
Katherine and Clifford Goldsmith
Joan and Lucio A. Noto
Jill and Robert C. Smith

2015

Alexandra Goldsmith Fallon
George J. Gillespie, III
Kimberly Gillespie
Katherine Goldsmith
Audrey Goldsmith Kubie
Joan Noto

2016

Honoring Kiaran McLaughlin

2017

Honoring Blair Underwood
Kernika Gupta
Renu Gupta
Meruka Hazari, MD

2018

Honoring Fred Lublin, MD

2019

Honoring Aaron Miller, MD

2020

Honoring Andrew Alper
Meruka Hazari, MD and
Vivek Hazari

2021

Fred Lublin, MD
Aaron Miller, MD
Ilana Katz Sand, MD

2022

Honoring Montel Williams

2023

Honoring Maria and
Gaetano Muzio

CORINNE GOLDSMITH DICKINSON CENTER ADVISORY BOARD MEMBERS

Alexandra Fallon
Katherine Goldsmith
Meruka Hazari, MD
Audrey Kubie
Alexandra Levin
Jessica March
Kate Milliken-Vaughey
Merritt Robinson

**THANK YOU FOR BEING SUCH IMPORTANT
MEMBERS OF THE CGDC FAMILY.**

CGDC FACULTY AND STAFF

FACULTY

Fred D. Lublin, MD, FAAN, FANA
Director

Aaron E. Miller, MD, FAAN, FANA
Medical Director

Ilana Katz Sand, MD
Associate Director

Erin Savner Beck, MD, PhD
Assistant Professor

Michelle T. Fabian, MD
Associate Professor

Sam H. Horng, MD, PhD
Assistant Professor

Sylvia Klineova, MD, MS
Assistant Professor

Stephen C. Krieger, MD
Professor

Sammita Mallur Satyanarayan, MD
Assistant Professor

Stephanie K. Tankou, MD, PhD
Assistant Professor

NEUROPSYCHOLOGY

Jordyn Anderson, PsyD
Assistant Professor

Sarah Levy, PhD
Assistant Professor

James F. Sumowski, PhD
Associate Professor

NURSE PRACTITIONERS

Anastasia Lyras, FNP-BC

Gretchen K. Mathewson, FNP-BC

SOCIAL WORKERS

Konul Azimzade, LCSW

Ilona A. Silva Alvarez, LMSW

ADMINISTRATIVE STAFF

Julisa Cepin

Ashly Mateo

Lady Navia

Jazmine K. Payne Jeffna Pierre

La Toija Striggles

DIVISION MANAGER

Bhumika P. Soni

PATIENT COORDINATOR

Heather J. Valdez

DIETICIAN

Jessica B. Gelman, MS, RDN, CDN

RESEARCH TEAM

Susan E. Filomena
Clinical Research Manager

Nicole Graziano
Clinical Research Manager

Emma Dereskewicz
Associate Researcher

Julia Lauren Galasso
Clinical Research Coordinator

Nadia Garcia
Clinical Research Coordinator

Robin Graney
Clinical Research Coordinator

Zoe Larock
Clinical Research Coordinator

Savannah Steer
Clinical Research Coordinator

Claire Wigley
Clinical Research Coordinator

FELLOWS

Marwa Baalbaki, MD
Neuroimmunology Fellow

Kathleen Bohomey, PhD
Neuropsychology Fellow

Jonadab Dos Santos Silva, MD
Postdoctoral Fellow, Beck Lab

Daniel Gratch, MD
Neuroimmunology Fellow

Jennings Gyedu, DO
Neuroimmunology Fellow

Bing-Canar Hanaan, PhD
Neuropsychology Fellow

Amit Kohli, MD
Neuroimmunology Fellow

Anita Kwashie, PhD
Neuropsychology Fellow

Francesco La Rosa, PhD
Postdoctoral Fellow, Beck Lab

Paola Leone, PhD
Postdoctoral Fellow, Tankou Lab

Elizabeth Daphne Verter, MBBS
Neuroimmunology Fellow



CORINNE GOLDSMITH DICKINSON CENTER FOR MULTIPLE SCLEROSIS AT MOUNT SINAI

The Center is one of the most innovative MS centers in the country, taking a multidisciplinary approach to treating this devastating disease, and offering all aspects of patient care within a single location.

Our unique model of care includes state-of-the-art programs in diagnostics, disease management, experimental therapeutics and research, as well as specialized support services and rehabilitation. Through basic science and groundbreaking clinical trials, the Center is working to translate new discoveries into effective therapies, eventually leading to a cure for a disease that affects 2.8 million people around the world.

GEORGE J. GILLESPIE, III*
CLIFFORD H. GOLDSMITH*
Co-Founders

FRED D. LUBLIN, MD, FAAN, FANA
Director and Saunders Family Professor of Neurology
Icahn School of Medicine at Mount Sinai

AARON E. MILLER, MD, FAAN, FANA
Medical Director and Professor of Neurology
Icahn School of Medicine at Mount Sinai

ILANA KATZ SAND, MD
Associate Director and Associate Professor of Neurology
Icahn School of Medicine at Mount Sinai

ERIC J. NESTLER, MD, PhD
Dean for Academic and Scientific Affairs
Director of The Friedman Brain Institute
Nash Family Professor of Neuroscience
Professor of Pharmacology and Systems Therapeutics
Professor of Psychiatry
Icahn School of Medicine at Mount Sinai

BARBARA G. VICKREY, MD, MPH
System Chair, Department of Neurology
Henry P. and Georgette Goldschmidt Professor of Neurology
Icahn School of Medicine at Mount Sinai

*Deceased

To learn more please visit <https://www.mountsinai.org/locations/multiple-sclerosis>

OUR LOCATIONS

Corinne Goldsmith Dickinson
Center for Multiple Sclerosis
5 East 98th Street, 1st Floor
New York, NY 10029-6574
Phone: 212-241-6854

Mount Sinai-Union Square
10 Union Square East, 5th Floor
New York, NY 10003
Phone: 212-844-8888

Mount Sinai West
1000 Tenth Avenue
2nd and 10th Floors
New York, NY 10019
Phone: 212-636-3277

CHANGING THE COURSE OF MULTIPLE SCLEROSIS CARE

The launch of the **C. Olsten MS Patient Wellness Program** in 2020 marked a significant development for the Corinne Goldsmith Dickinson Center for MS at Mount Sinai. The program is a wonderful resource for people living with MS that has become the gold standard in comprehensive MS care.

Under the oversight of Center Director **Fred D. Lublin, MD**, and Co-Directed by Center Associate Director **Ilana B. Katz Sand, MD**, and Nurse Practitioner **Gretchen K. Mathewson, FNP**, the Wellness Program focuses on the entire person by using a holistic, multidisciplinary approach that aims to help participants optimize quality of life and improve their long-term prognosis.

Participation in the program begins with an evaluation through the CGD Center's Comprehensive Annual Assessment Program, run through the MS Neuropsychology clinic (**James Sumowski, PhD, Sarah Levy, PhD, Jordyn Anderson, PsyD**). This visit includes the completion of questionnaires about symptoms and functioning in daily life, as well as assessments of cognition, motor function, and balance. The report generated from this visit provides the wellness team with a clear starting point regarding the patient's experiences, strengths, and opportunities for improvement.

"The integrity and quality of our team here and the trust that has been built between our clinicians and patients have created a sense of accountability among all of us and confidence among our patients."

-Gretchen Mathewson

At the initial wellness visit, participants meet with an MS Center nurse practitioner (**Gretchen Mathewson, FNP, Stacie Lyras, FNP-BC**), dietitian (**Jessica Gelman, RDN**), social worker (**Konul Azimzade, LCSW**), and Mount Sinai physical therapist specializing in neurological disorders. This team approach ensures careful attention to factors like diet, exercise, sleep, and social and emotional health for each participant. Each patient receives a personalized care plan that is tailored to their needs and goals. Follow up visits are scheduled accordingly. For those who may need additional support with implementation of recommendations, **Jordyn Anderson, PsyD** provides behavioral health counseling.

The program's remarkable success has led to a long waiting list for enrollment and garnered much positive feedback, positioning it as a model for initiatives within Mount Sinai and nationwide. The wellness team is constantly working on improving the program further, with current efforts focused on significantly expanding capacity to ensure access for all who may benefit going forward.

NURTURING NEW LEADERS IN MULTIPLE SCLEROSIS

Dr. Fred Lublin initiated the **Fellowship Program** in 2001, just before the Center's inauguration, to propel advancements in multiple sclerosis medicine by fostering innovative ideas and enhanced treatment approaches. Since its inception, **24 fellows have successfully completed the Program**, establishing the Center as a pioneering **National Multiple Sclerosis Society Training Center**. This recognition not only underscores our prestige but also secures consistent funding from the National MS Society, dedicated explicitly to fellowship training. Such support plays a pivotal role in expanding this field and introducing fresh perspectives to our patient care.

While numerous multiple sclerosis-focused fellowships exist nationwide, ours distinguishes itself through a culture of collaboration, often hailed as the most memorable aspect of our former fellows' experiences. Our fellows benefit from high-quality, hands-on training and extensive patient interaction, participating in both initial consultations and follow-up visits alongside primary physicians. These direct patient engagements not only enrich the fellowship journey but also provide an additional lens on complex cases, offering fresh insights into patient challenges.

Over time, we've witnessed the remarkable career trajectories of our alumni, with many assuming leadership roles in multiple sclerosis departments at esteemed institutions. Some have even chosen to join our faculty on a full-time basis, further enriching our community here at Mount Sinai.

In addition to the fellowship program, Icahn Mount Sinai's highly regarded and robust **Neurology Residency Program** is also an important part of our educational endeavors.

Under the guidance of **Dr. Michelle Fabian**, who not only oversees clinical care but also manages numerous clinical trials at the Center, the Program builds upon the foundation established by **Dr. Stephen Krieger**. Currently, **39 residents are actively engaged in the Program**, gaining invaluable experience working directly with patients across a spectrum of neurological disorders.

Within the Program, residents benefit from mentorship provided by faculty members, allowing for personalized guidance and support. Moreover, they have the opportunity to present their research findings not only to their peers and faculty but also to colleagues nationwide through participation in local and national conferences.

This comprehensive approach to neurology residency training ensures that our residents receive a well-rounded education, equipping them with the skills and knowledge necessary to excel in their future careers as neurologists.

"There are many multiple sclerosis centers around the country now, but we are unique because of the incredible collegial spirit between clinicians and research staff, our long history of training fellows, and our involvement in virtually every multiple sclerosis treatment that's on the market today."

-Aaron Miller, MD

THANK YOU TO OUR SPONSORS

WE RELY ON THE COMMITMENT AND COMPASSION OF FRIENDS LIKE YOU WHO GENEROUSLY SUPPORT OUR ANNUAL BENEFIT, A CRITICAL FACTOR IN THE SUCCESS OF THE CENTER.

PLATINUM BENEFACTORS

Alper Family Foundation
Katherine Goldsmith

GOLD BENEFACTORS

Amgen
Biogen
Alex Goldsmith Fallon and Dan Fallon
The Fishman Family
Renu and Navin Gupta
Audrey Goldsmith Kubie and David Kubie
Rama and Shashi Marda Foundation
George Roche
TG Therapeutics

SILVER BENEFACTORS

The Muzio Family
Ruth Porat and Anthony Paduano
Merritt Robinson

BRONZE BENEFACTORS

Genentech
Ilana Katz Sand, MD and Michael Sand

PATRON SPONSORS

Barbara and Todd Albert, MD
Alexion
Janet Campagna, MD
Nikunj Gandhi and Minjal Dharia
EMD Serono
Tatyana Feldman, MD
Lois Perelson-Gross and Stewart Gross
Meruka Hazari, MD and Vivek Hazari
The Jacobson Family
Alexandra and David Kamin
Ronald Kaufman
The Melia Family
Priya and Ashok Raju
Meryl Rosofsky, MD and Stuart Coleman
Andrea Sachs
Camille Samuels
Richard Slifka
Davida Perry and Ronald Solow

CELEBRATION SPONSORS

Susan H. Alter
Sanah Ansari
Martha S. Jimenez and Kenneth Bandler
Jolana Blau
Isabel Blumberg, MD and Rishon Blumberg
Bristol Myers Squibb
Sally Brody
Marc Comerchero
Aysin and Sam Dickinson
Michelle Fabian, MD and Michael Fabian
Rita Oussani and Joseph Farraye, MD
Vanessa and Bruce Gavioli
Nada Gligorov, MD and Stephen Krieger, MD
Amy and Roy Kulnick, MD
Pamela Kumar
Barbara and Fred Lublin, MD
Ellen and Aaron E. Miller, MD
Shefali Murdia
Dana Goldsmith Needleman and
Brad Needleman
Janice and Yoji Nimura
Sarena and Naitik Patel
Fred Pomerance
Alvin and Anjulika Saini
Susan L. West

List as of March 6, 2024

SPECIAL THANKS

Alyssa Kind, Kind Events NY

Joshua K Design

The Juilliard School

Jennifer O'Neal, Three-Ring Binder Events

Patricia Burmicky Photography

Pleasant View Printing & Graphics

The Prendel Company

MOUNT SINAI OFFICE OF DEVELOPMENT

AND THE

CORINNE GOLDSMITH DICKINSON CENTER FOR

MULTIPLE SCLEROSIS AT MOUNT SINAI

David Gerard, Magician and Mentalist

To learn more visit, <https://www.davidgerard.com/>



**REMARKS AND PRESENTATION OF THE
2024 CLIFFORD H. GOLDSMITH AWARD**

FRED D. LUBLIN, MD, FAAN, FANA
Director and Saunders Family Professor of Neurology
Icahn School of Medicine at Mount Sinai

AARON E. MILLER, MD, FAAN, FANA
Medical Director and Professor of Neurology
Icahn School of Medicine at Mount Sinai

ILANA KATZ SAND, MD
Associate Director and Associate Professor of Neurology
Icahn School of Medicine at Mount Sinai

2024 CLIFFORD H. GOLDSMITH AWARD RECIPIENT
KATHERINE GOLDSMITH

PATIENT REMARKS
MERUKA HAZARI, MD
Advisory Board Member, CGDC

SPECIAL PERFORMANCE
DAVID GERARD
Magician and Mentalist

APPETIZER

VEGETABLE TIAN

Char-Grilled Eggplant, Zucchini, Yellow Squash, Bell Pepper
Basil Vinaigrette, Red Pepper Emulsion
Balsamic, Microgreens

ENTRÉE

PAN SEARED SALMON

Beluga Lentils, Butternut Squash, Kale
Fried Sage Emulsion

VEGETARIAN OPTION AVAILABLE UPON REQUEST

DESSERT

TRIO OF SORBET AND GELATO

Raspberry, Coconut, Dark Chocolate
Tuile Cookie Cup
Fruit Coulis, Mint

COFFEE AND ASSORTED TEAS

*Menu created with guidance from the
C. Olsten MS Patient Wellness Program*



It is a pleasure to accept this award named for Clifford, in remembrance of his dedication to the fight against MS, and his vision for the Center.

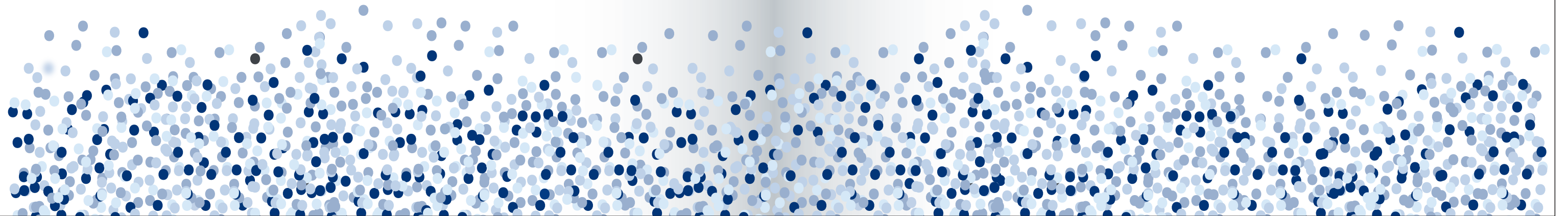
KATHERINE GOLDSMITH



Congratulations to Katherine Goldsmith,
and thank you to the Goldsmith family
for their leadership and support of the
Corinne Goldsmith Dickinson Center for
Multiple Sclerosis at Mount Sinai.

Their unwavering commitment,
compassion, and expertise have made
a profound difference in the lives of
countless individuals and families.

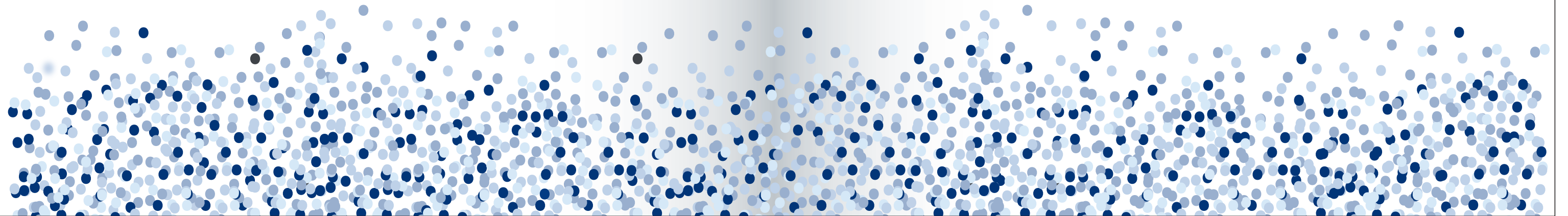
THE ALPER FAMILY FOUNDATION





Congratulations
Corinne Goldsmith Dickinson Center for
Multiple Sclerosis on the decades of
differences you have made in the lives of
your patients and their families!

With Tremendous Gratitude,
MERUKA AND VIVEK HAZARI



Fighting the World's Toughest Diseases

AMGEN'S MISSION IS TO SERVE PATIENTS

Amgen is committed to unlocking the potential of biology for patients suffering from serious illnesses by discovering, developing, manufacturing and delivering innovative human therapeutics.



EVERYTHING WE DO IS MOTIVATED BY OUR COMMITMENT TO OUR COMMUNITY

Our legacy of leadership has had an impact on individuals living with multiple sclerosis (MS) and their caregivers



LEGACY

Committed to ongoing research and bringing treatment options to those living with MS for 40 years.



SUPPORT

Providing educational resources, informative live events, innovative apps, and a welcoming online community.



PROVIDE

Discover Biogen treatment options for those living with MS throughout their journey.

Learn more about MS



Learn more about prescription treatment options for relapsing MS and active secondary-progressive multiple sclerosis



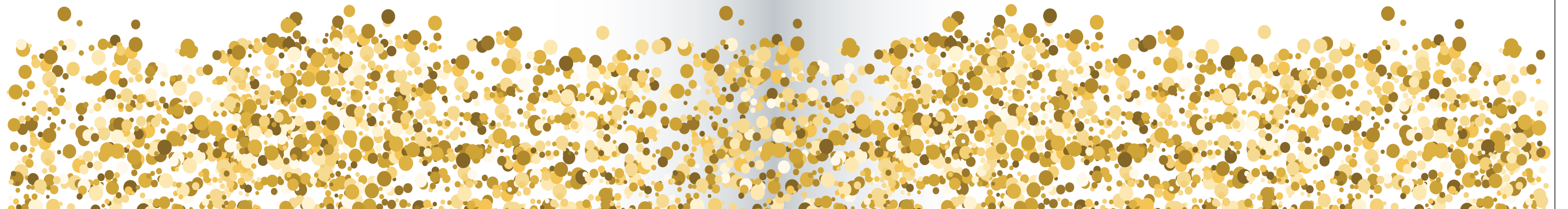


Mom, Katherine, Grandma,
Your generosity is boundless.

We are so proud of your
dedication to the CGD Center
and its mission.

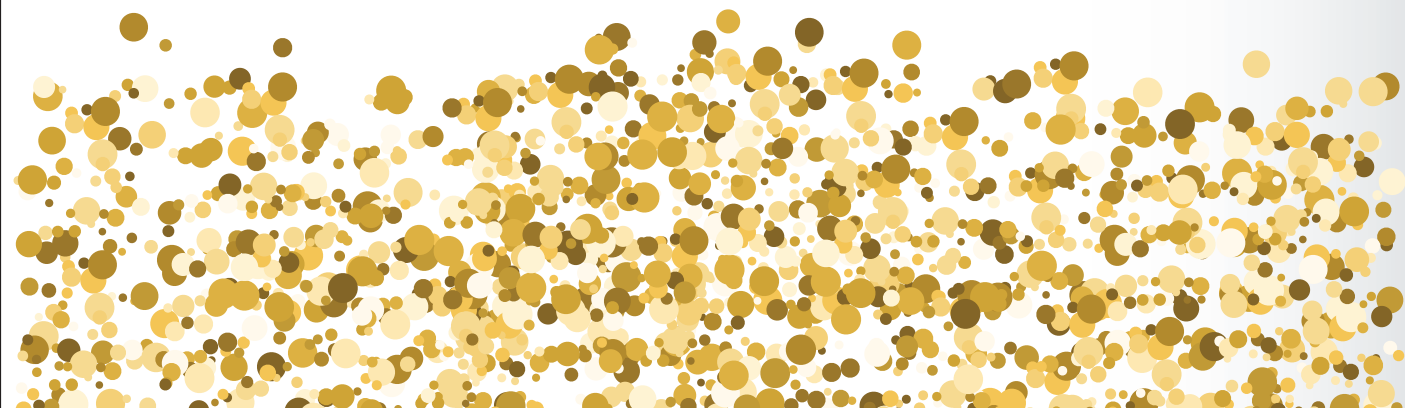
Congratulations on this
very well-deserved honor.

ALEX AND DAN
CONRAD, OLIVER, DAISY



Thank you to the faculty and staff of the
Corinne Goldsmith Dickinson Center
for Multiple Sclerosis at Mount Sinai
for their commitment and dedication to
every patient they serve.

FISHMAN FAMILY

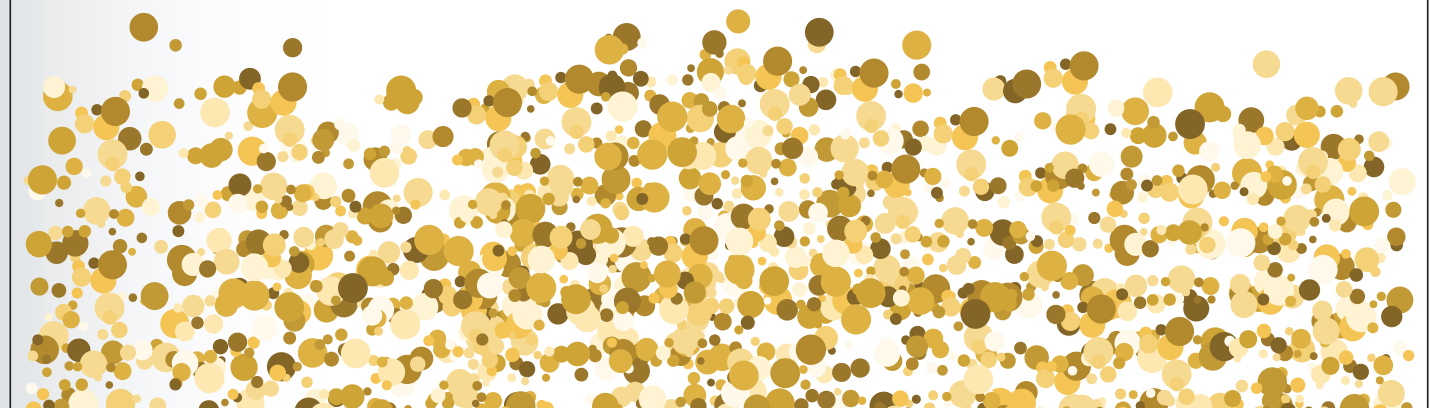


Congratulations to Katherine Goldsmith
and the
Corinne Goldsmith Dickinson Center
Faculty and Staff!

We applaud their steadfast commitment
and continued achievements in the
advancements against multiple sclerosis.

Our most heartfelt gratitude for their
invaluable contributions, and the promise
of hope for a brighter future.

RENU GUPTA, MD AND NAVIN GUPTA
THE VAST FOUNDATION

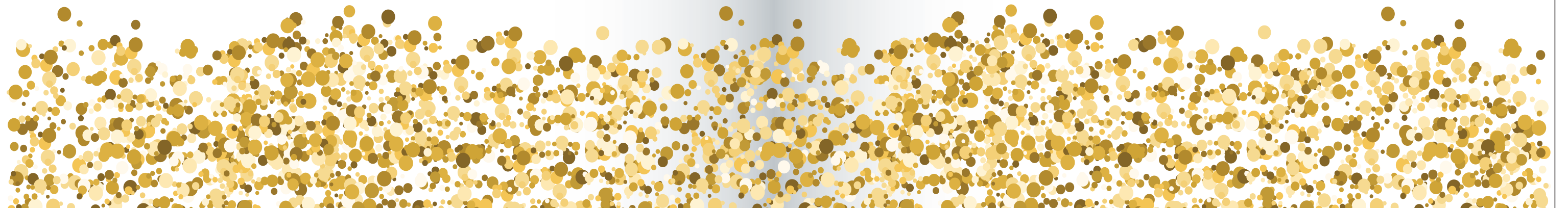


Congratulations to the CGD Center
on its continued excellence.

Bravo and fond wishes to
Katherine Goldsmith.

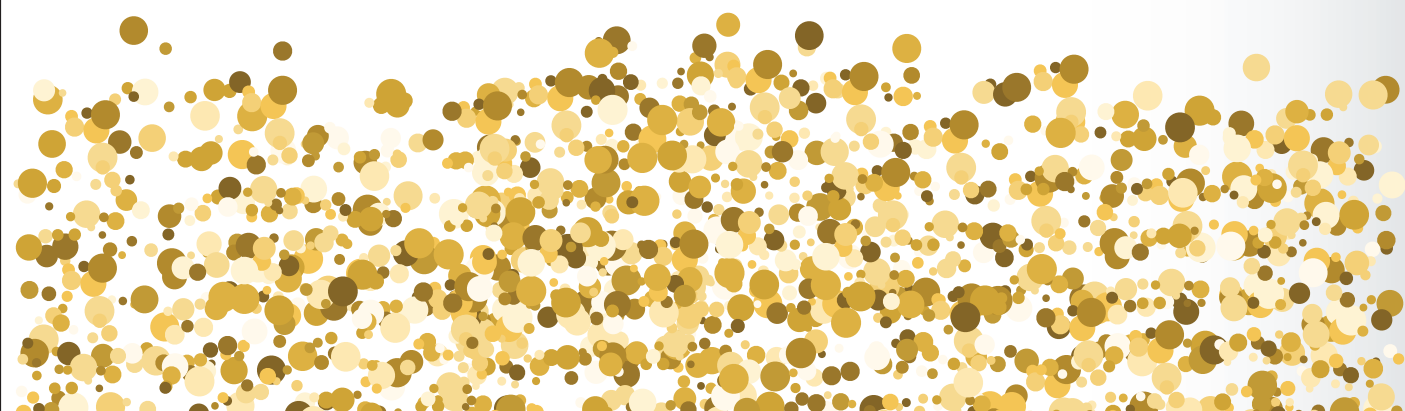
She is a matriarch extraordinaire and
has been resolute in following our
father's wishes to make the Center a
place where patient care is of
supreme quality.

THE KUBIE FAMILY



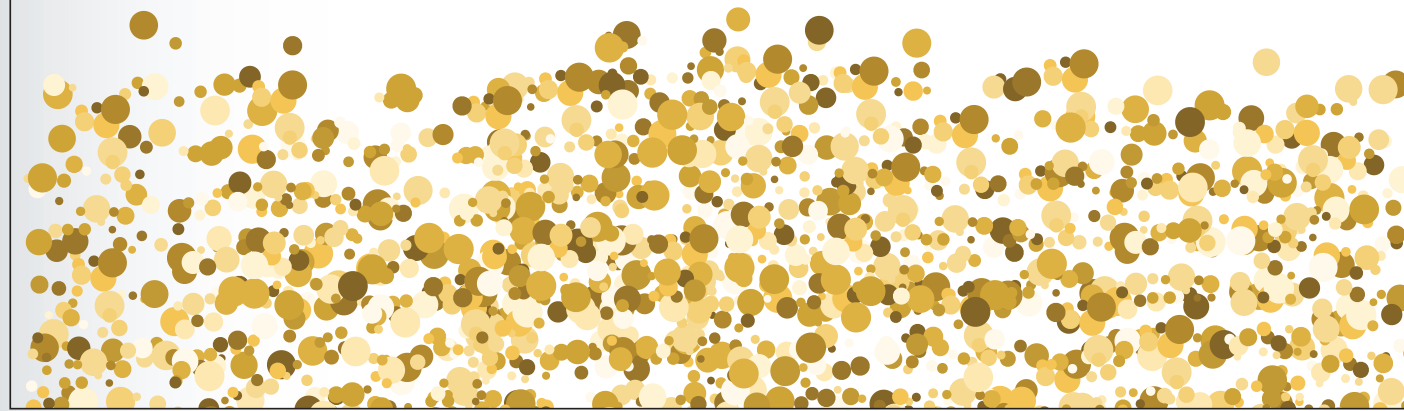
In appreciation of
Katherine Goldsmith
for her enduring contributions
to the CGD Center.

ALI AND DAVE KAMIN



Thank you to the
Corinne Goldsmith Dickinson Center for
Multiple Sclerosis at Mount Sinai
for providing remarkable patient care.

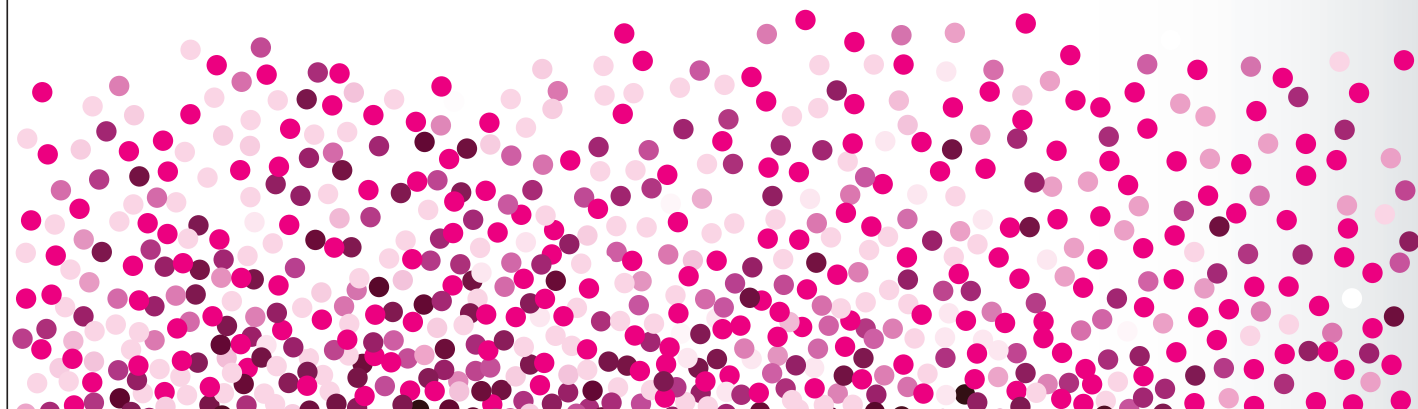
RAMA AND SASHI MARDA FOUNDATION



Congratulations to the
Corinne Goldsmith Dickinson Center
Faculty and Staff!

We applaud their achievements and
extend our heartfelt gratitude for their
invaluable contributions to improving
healthcare and fostering hope for a
brighter future.

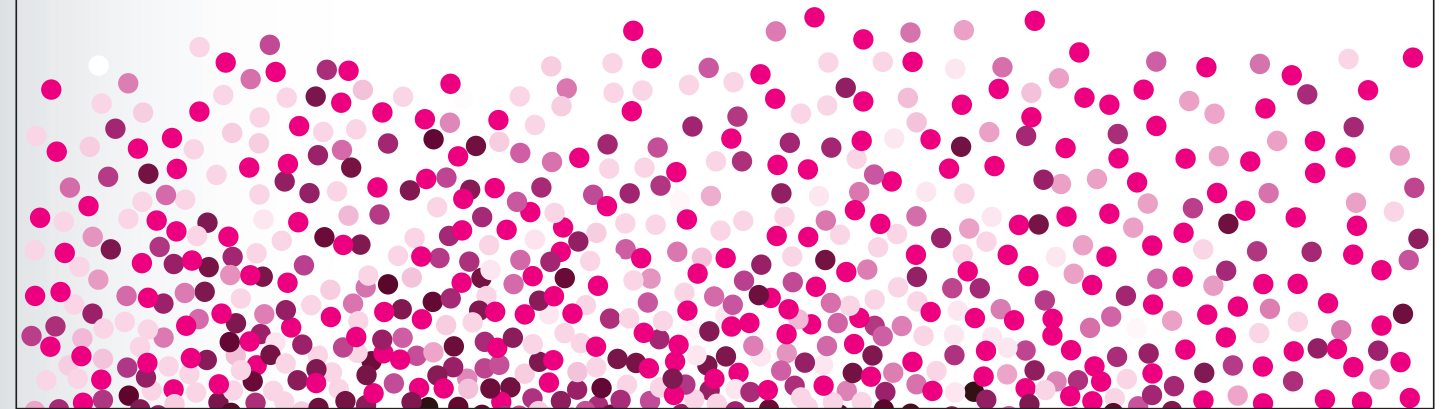
THE MUZIO FAMILY



Proud to support
Dr. Fred Lublin, Dr. Aaron Miller,
and the exceptional team at the
Corinne Goldsmith Dickinson Center
for Multiple Sclerosis at Mount Sinai.

Their dedication and groundbreaking work
in the field of multiple sclerosis continue
to inspire us all.

MERRITT ROBINSON





FIERCELY FOCUSED ON MULTIPLE SCLEROSIS



TG THERAPEUTICS IS
PROUD TO SUPPORT THE
CORINNE GOLDSMITH DICKINSON CENTER
FOR MULTIPLE SCLEROSIS AT MOUNT SINAI

THEIR UNWAVERING COMMITMENT, COMPASSION,
AND EXPERTISE, HAVE MADE A PROFOUND DIFFERENCE
IN THE LIVES OF COUNTLESS INDIVIDUALS AND FAMILIES.

LEARN MORE ABOUT OUR FEARLESS
PURSUIT AT [TG THERAPEUTICS.COM](https://www.tgtherapeutics.com)

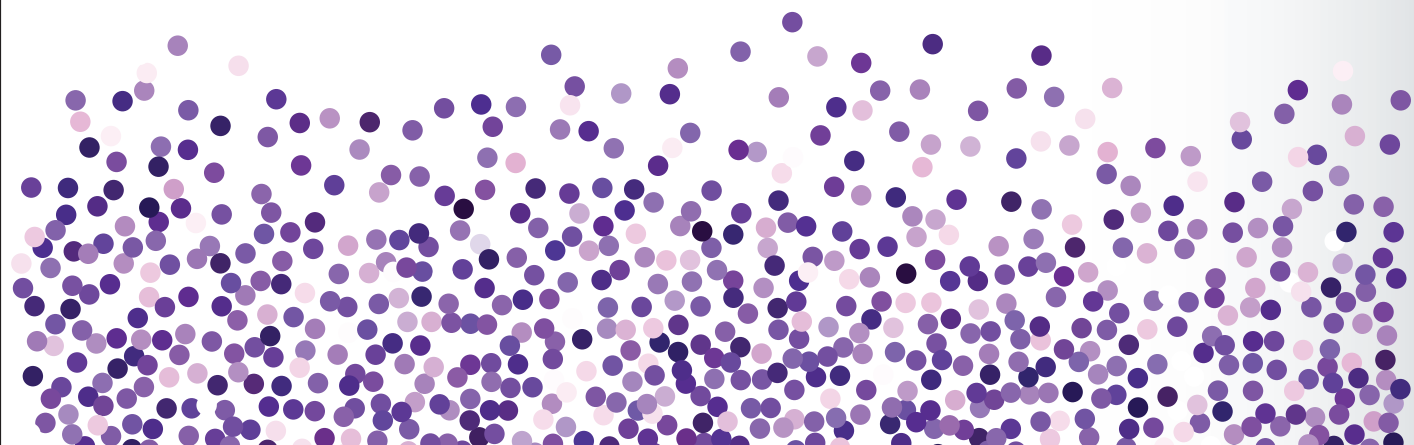
FORGING BREAKTHROUGHS TO IMPROVE THE LIVES OF ALL PATIENTS

Genentech
A Member of the Roche Group

JOIN US

In recognition of her
remarkable contributions and
enduring dedication to the CGD Center,
we are honored to pay tribute to
Katherine Goldsmith.

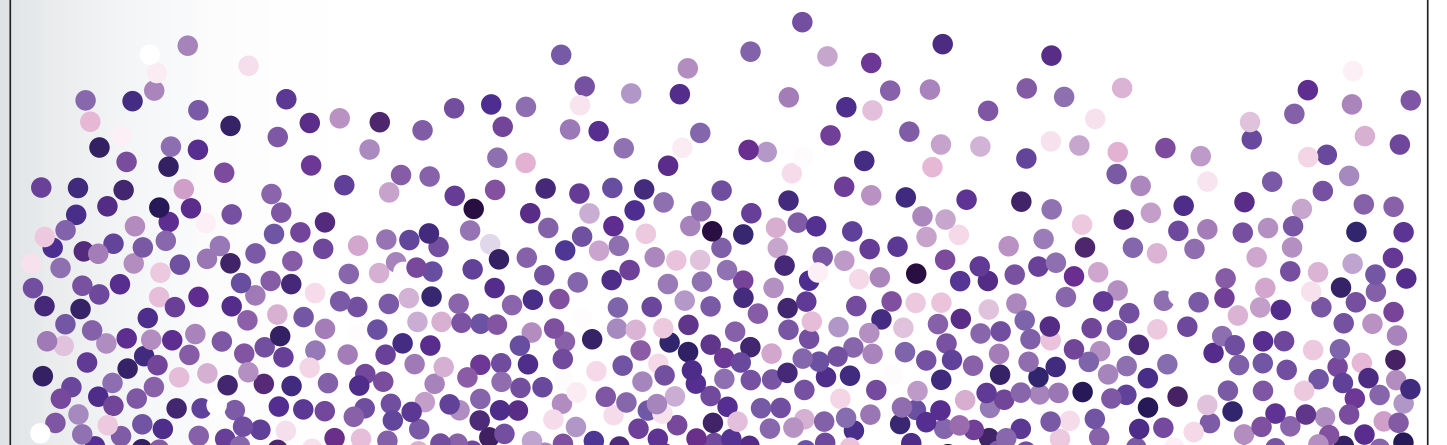
BARBARA AND FRED LUBLIN, MD



My heartfelt appreciation to Katherine Goldsmith
for her exceptional and enduring contributions
to the CGD Center, and to all of the wonderful
faculty and staff making a difference in people's
lives every day.

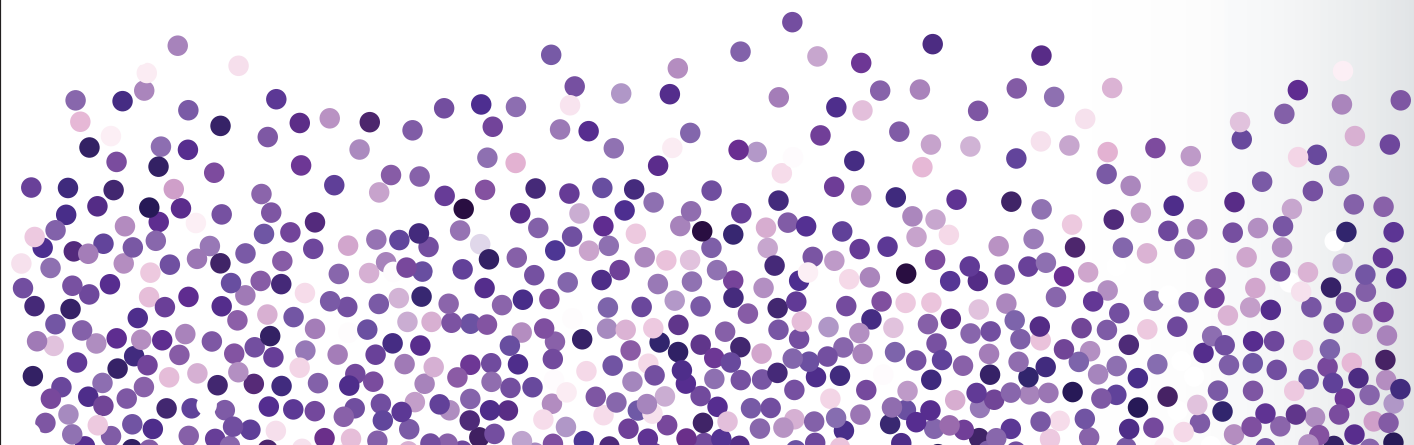
It is an honor to work with you all.

ILANA KATZ SAND, MD



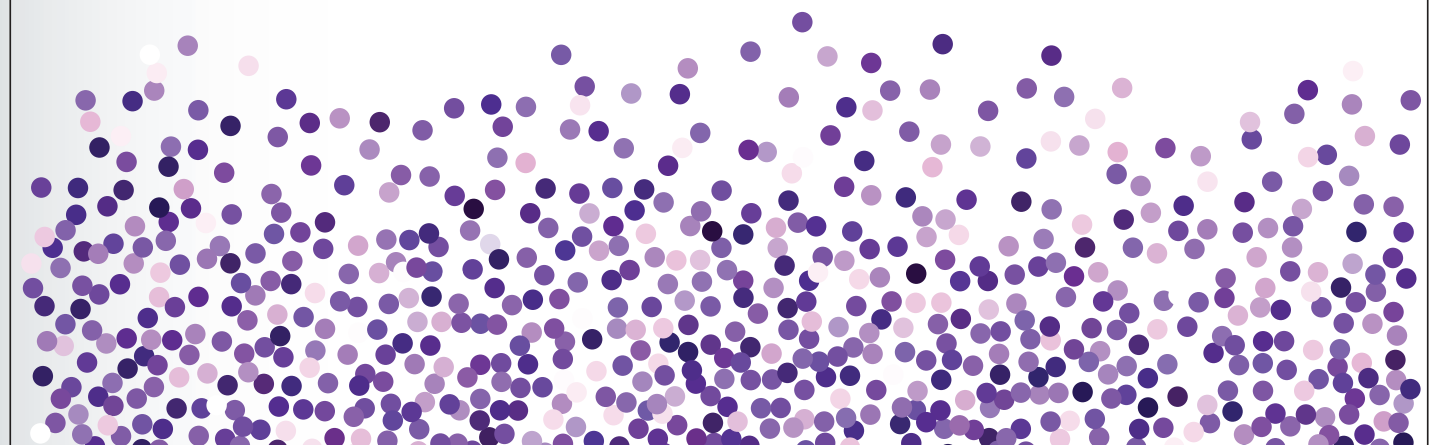
We extend our gratitude to
Katherine Goldsmith
for her dedication and invaluable
contributions to the CGD Center

ELLEN AND AARON MILLER, MD



In honor of
Katherine Goldsmith
for her unwavering commitment to
the CGD Center and the
Mount Sinai Health System.

OFFICE OF SPECIAL EVENTS
MOUNT SINAI HEALTH SYSTEM

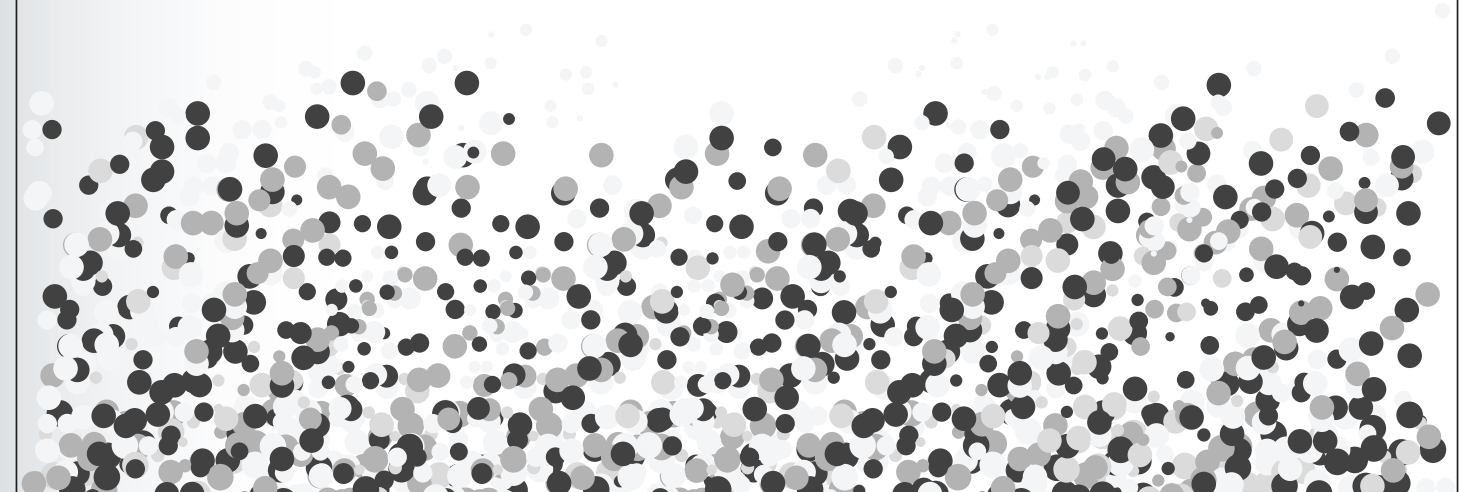


**Rare Inspiration.
Changing Lives.**

At Alexion, our mission is to transform the lives of people affected by rare diseases and devastating conditions through the development and delivery of innovative medicines, as well as through supportive technologies and healthcare services. alexion.com

I am honored to contribute to the Center's vital mission of advancing research, providing exceptional care, and improving the lives of those affected by multiple sclerosis.

JANET CAMPAGNA, MD





Congratulations to the
Corinne Goldsmith Dickinson Center
Faculty and Staff!

THE DICKINSON FAMILY

To our Grandmother and Great-grandmother
Katherine Goldsmith

Congratulations on being chosen as
this year's honoree!

We applaud all of your contributions
and devotion to the
Corinne Goldsmith Dickinson Center
for over 22 years!

Much Love,
SAM, AYSIN, ADEM AND LEYLA DICKINSON

ASPIRING

to create, improve and prolong lives

We're imagining the future of healthcare for those living with difficult-to-treat conditions like multiple sclerosis, cancer and infertility.

Passion fuels us on our mission to transform lives.

#BEEMDserono

Proud to support the
Corinne Goldsmith
Dickinson Center
for Multiple Sclerosis
at Mount Sinai.

**EMD
serono**

Aspiring to Create,
Improve and
Prolong Lives

EMD Serono is the Healthcare business of Merck KGaA, Darmstadt, Germany in the U.S. and Canada. © 2021 Merck KGaA, Darmstadt, Germany or its affiliates. All Rights Reserved.

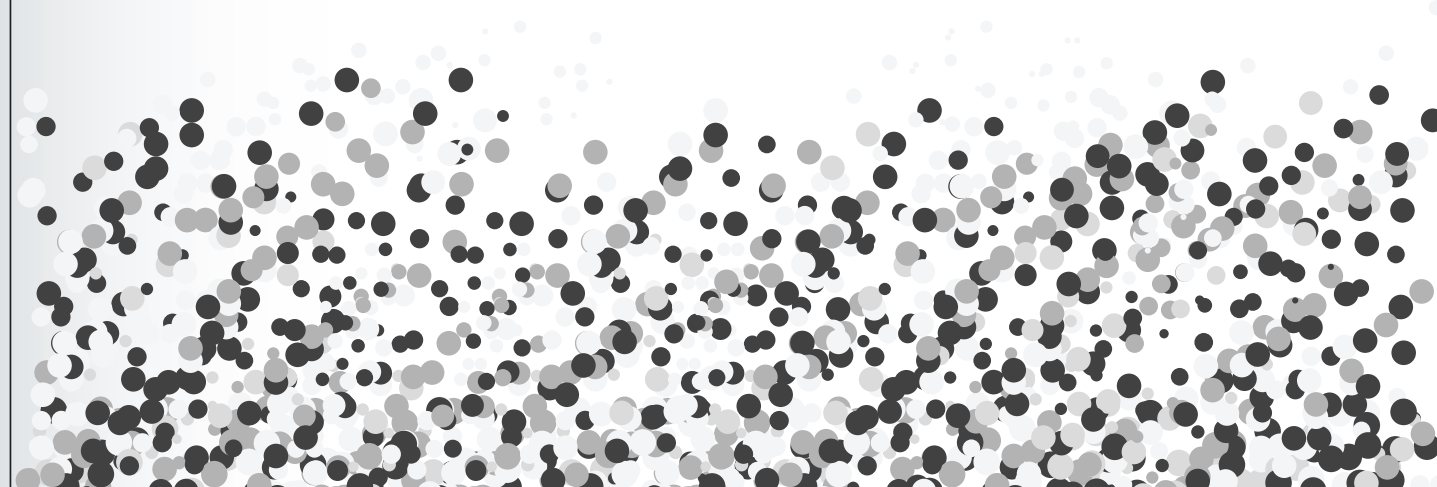
US-NONGM-00031



Proud to support
Dr. Fred Lublin and the
Corinne Goldsmith Dickinson Center
for Multiple Sclerosis at Mount Sinai.

Their unwavering commitment,
compassion, and expertise, have made
a profound difference in the lives of
countless individuals and families.

TATYANA FELDMAN, MD



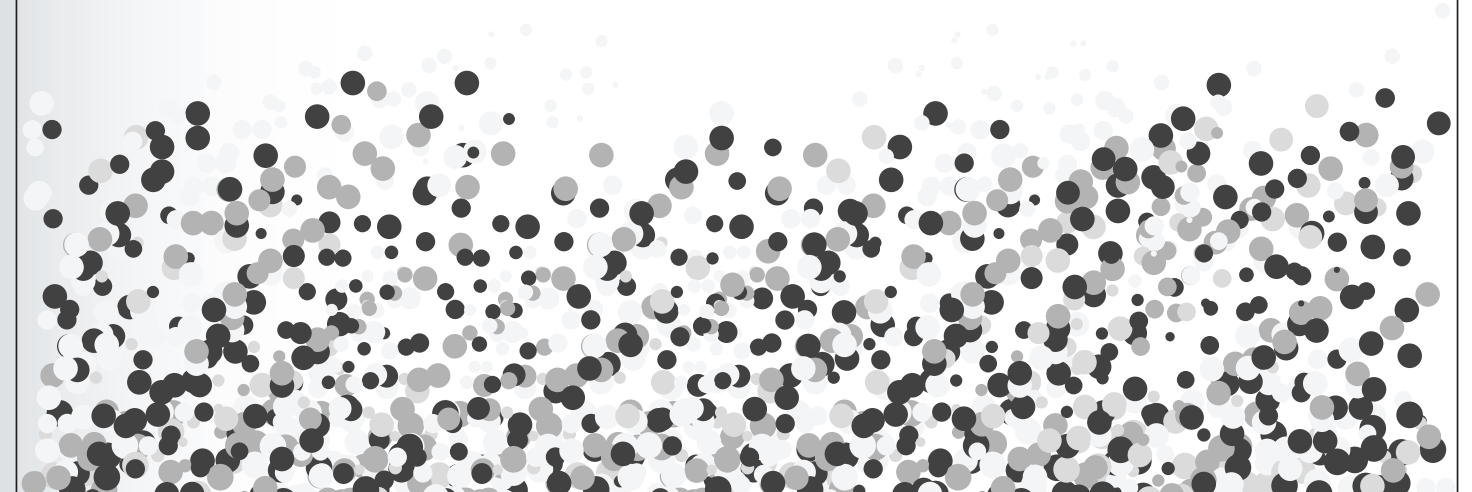
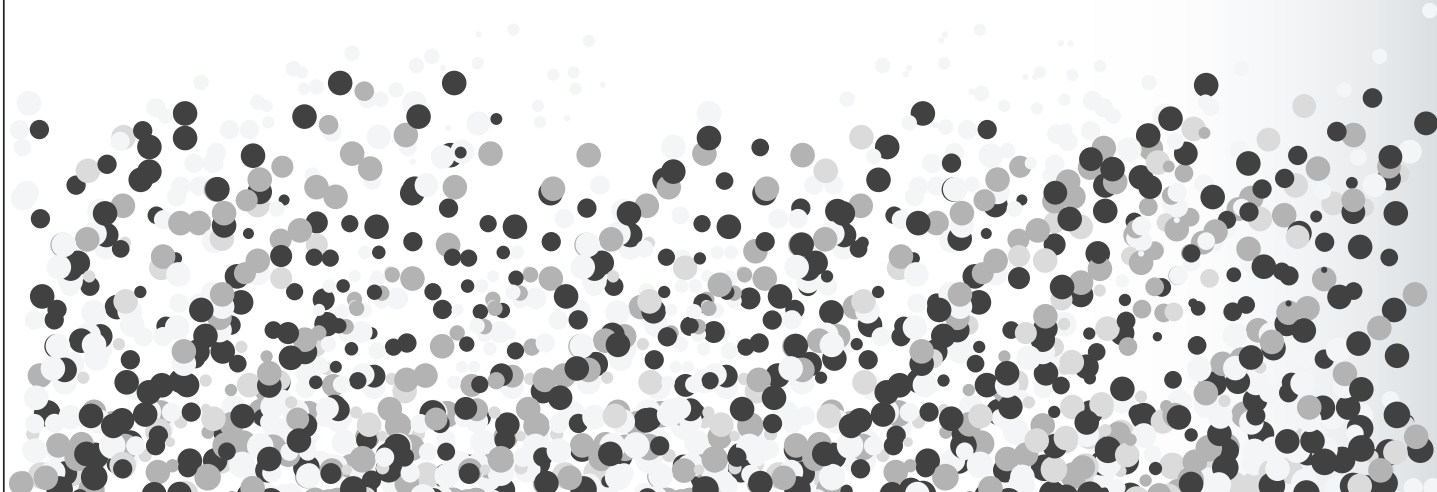
We are honored to pay tribute to
Katherine Goldsmith
in recognition of her remarkable
contributions and enduring dedication to the
Corinne Goldsmith Dickinson Center
for Multiple Sclerosis at Mount Sinai.

RUTH PERELSON,
LOIS PERELSON-GROSS AND
STEWART GROSS

My heartfelt congratulations to the
faculty and staff of the
Corinne Goldsmith Dickinson Center
for Multiple Sclerosis at Mount Sinai.

Your commitment to this vital cause is truly
commendable, and I am honored to be part
of such a significant endeavor.

PRIYA AND ASHOK RAJU



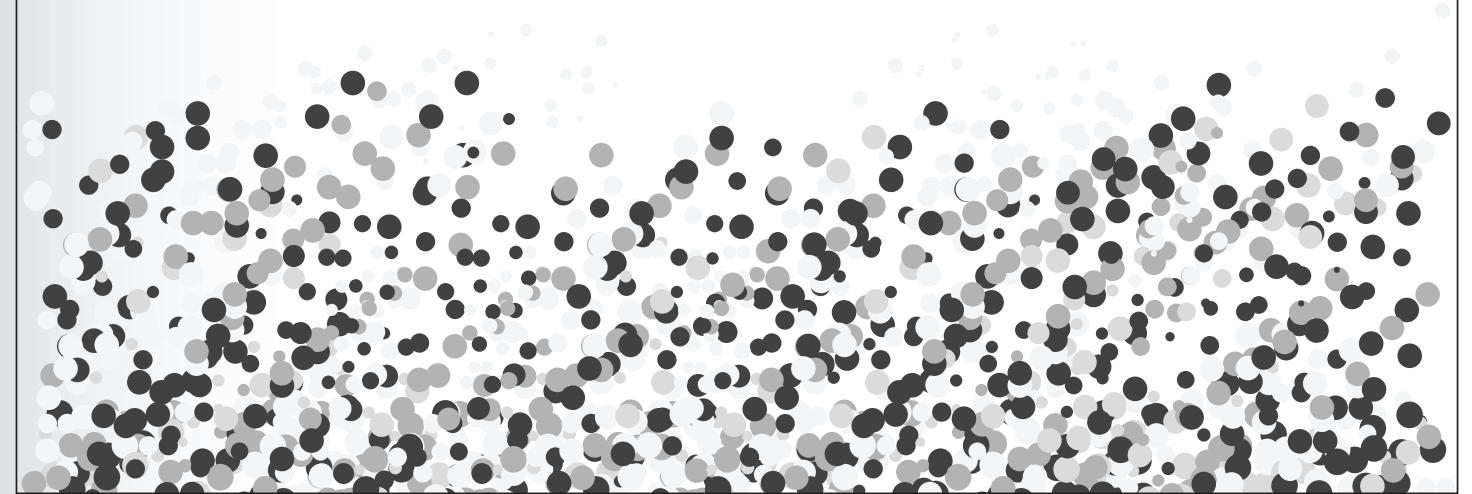
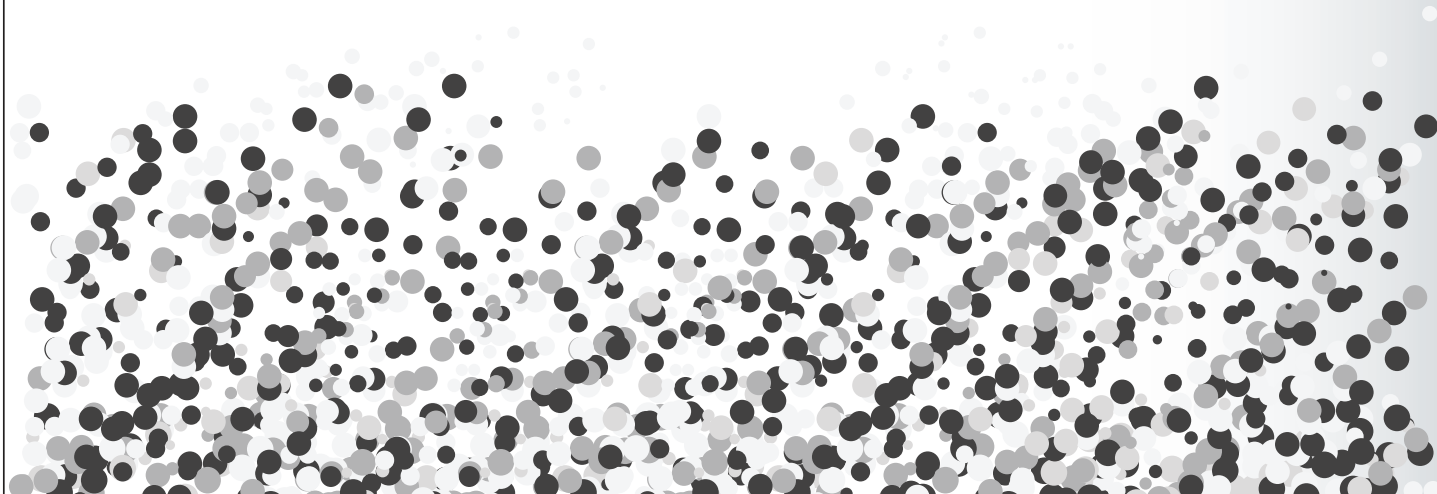
We are honored to support the
Corinne Goldsmith Dickinson Center
for Multiple Sclerosis at Mount Sinai.

With gratitude,
STUART H. COLEMAN AND
MERYL ROSOFSKY

Congratulations to the
Corinne Goldsmith Dickinson Center
Faculty and Staff!

I applaud their achievements and
extend my heartfelt gratitude for their
invaluable contributions to improving
healthcare and fostering hope for a
brighter future.

ANDREA SACHS



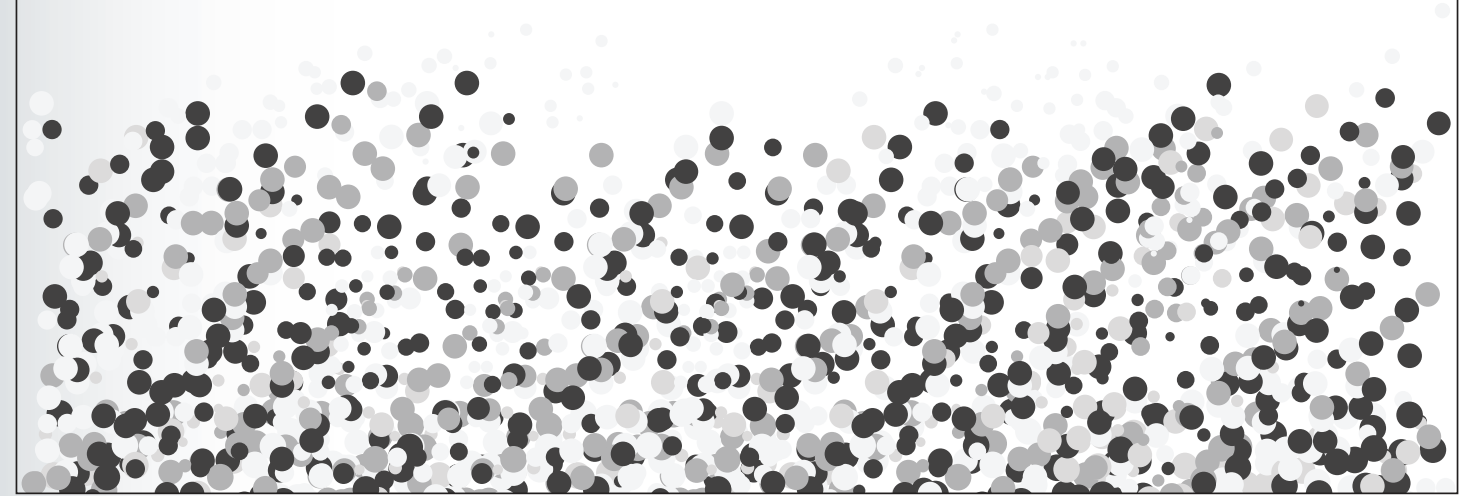
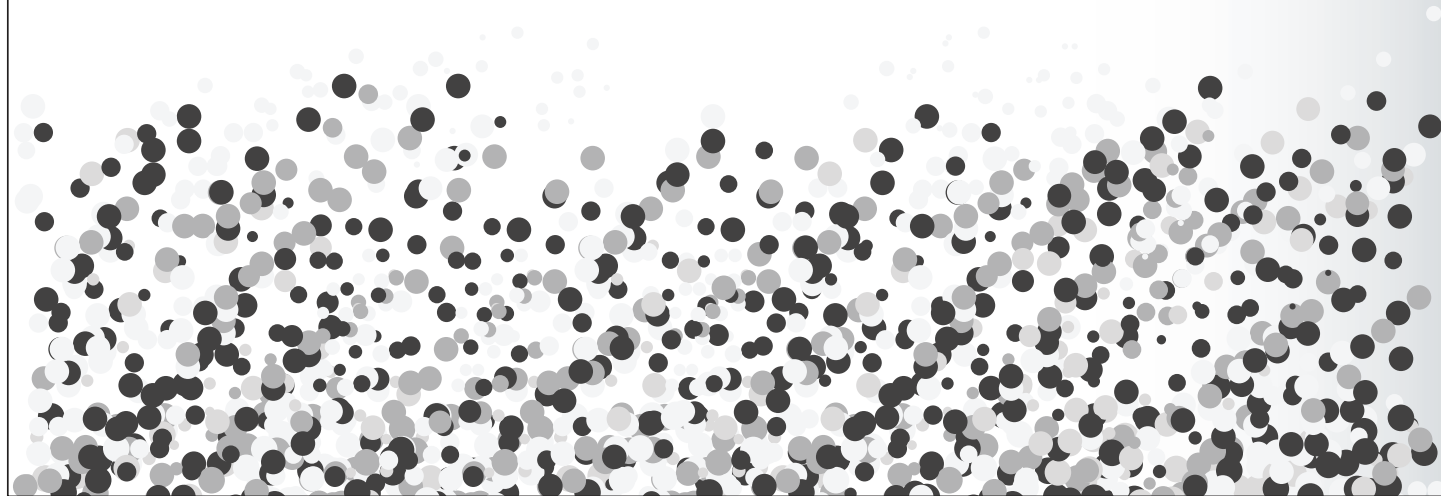
Proud to support the
Corinne Goldsmith Dickinson Center
for Multiple Sclerosis at Mount Sinai.

Thrilled to see Katherine's quiet
dedication and commitment recognized!
We wish we could be there to congratulate
you in person.

Love and hugs from California,
CAMI SAMUELS AND FAMILY

Congratulations to
Katherine Goldsmith
for her remarkable contributions and
enduring dedication to the CGD Center.

EILEEN SOLOMON





SCHWARTZ PERRY & HELLER

is a proud supporter of
Corinne Goldsmith Dickinson Center
for Multiple Sclerosis.

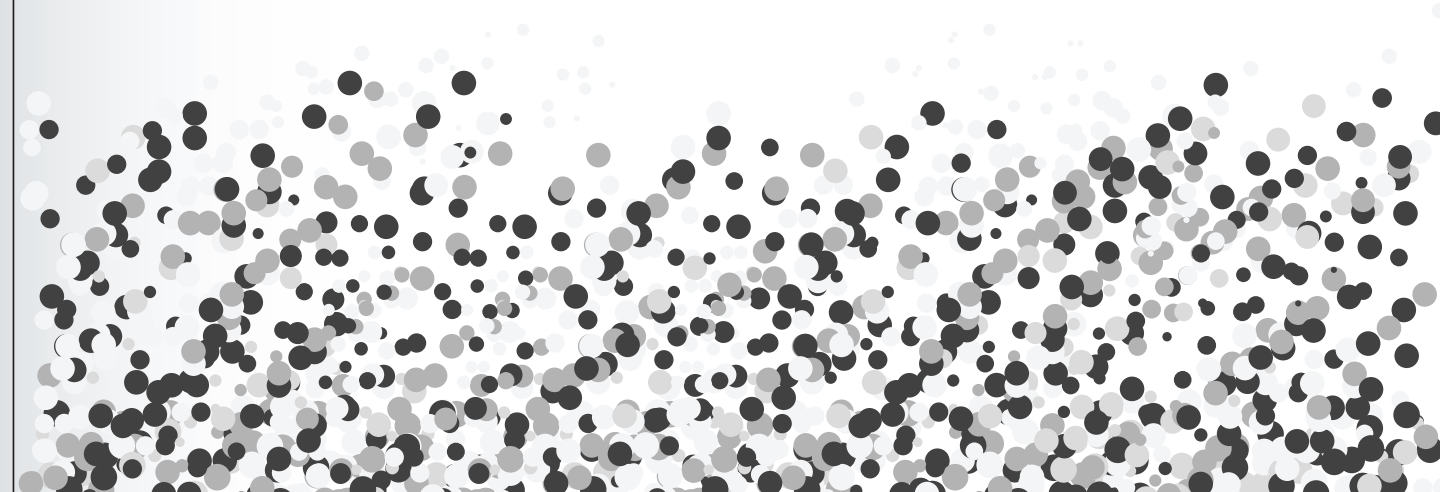
For over four decades, SPH has
championed the rights of individuals with
disabilities, including MS, to ensure fair
treatment under the human rights laws.

Trust us to be your advocate for equitable
employment practices.

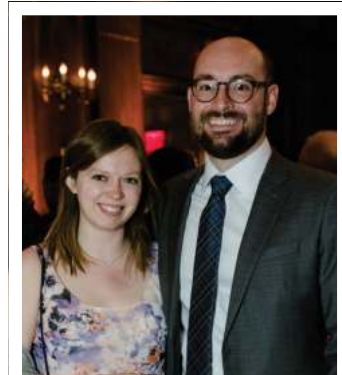
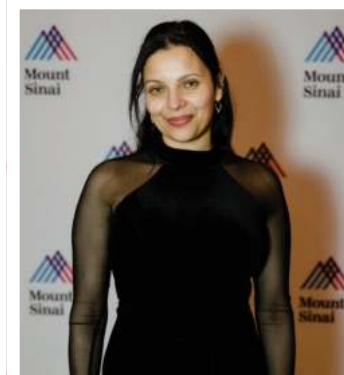
sphlegal.com – 212-889-6565

Congratulations to
Katherine Goldsmith
and to the
Corinne Goldsmith Dickinson Center
Faculty and Staff.

STEPHEN TOTH



2023 21ST ANNUAL MS CENTER CELEBRATION



THANK YOU FOR YOUR SUPPORT!

Your gift ensures that the team at the Corinne Goldsmith Dickinson Center remains steadfast in their dedication to pursuing improved treatments and, ultimately, a cure for MS.

All donations are fully tax-deductible. To support, open the camera on your phone, scan the code below and tap the notification banner that appears at the top.

